



MAIGA & CO®

INTERNATIONAL

|

ALLAH KI YIRIWA



+90 535 941 47 28

+223 74 73 00 06

WWW.MAIGACO.COM

MAHAMADOU MAIGA906@YAHOO.COM

ZAFER MAH ADILE NASIT BULVARI SEHIR MERKEZI
HOME OFIS BLOK KAT 16 NO 191 ESENYURT ISTANBUL



CURING LINKAGE LINE



RUBBER QUALITY TESTING LABORATORY



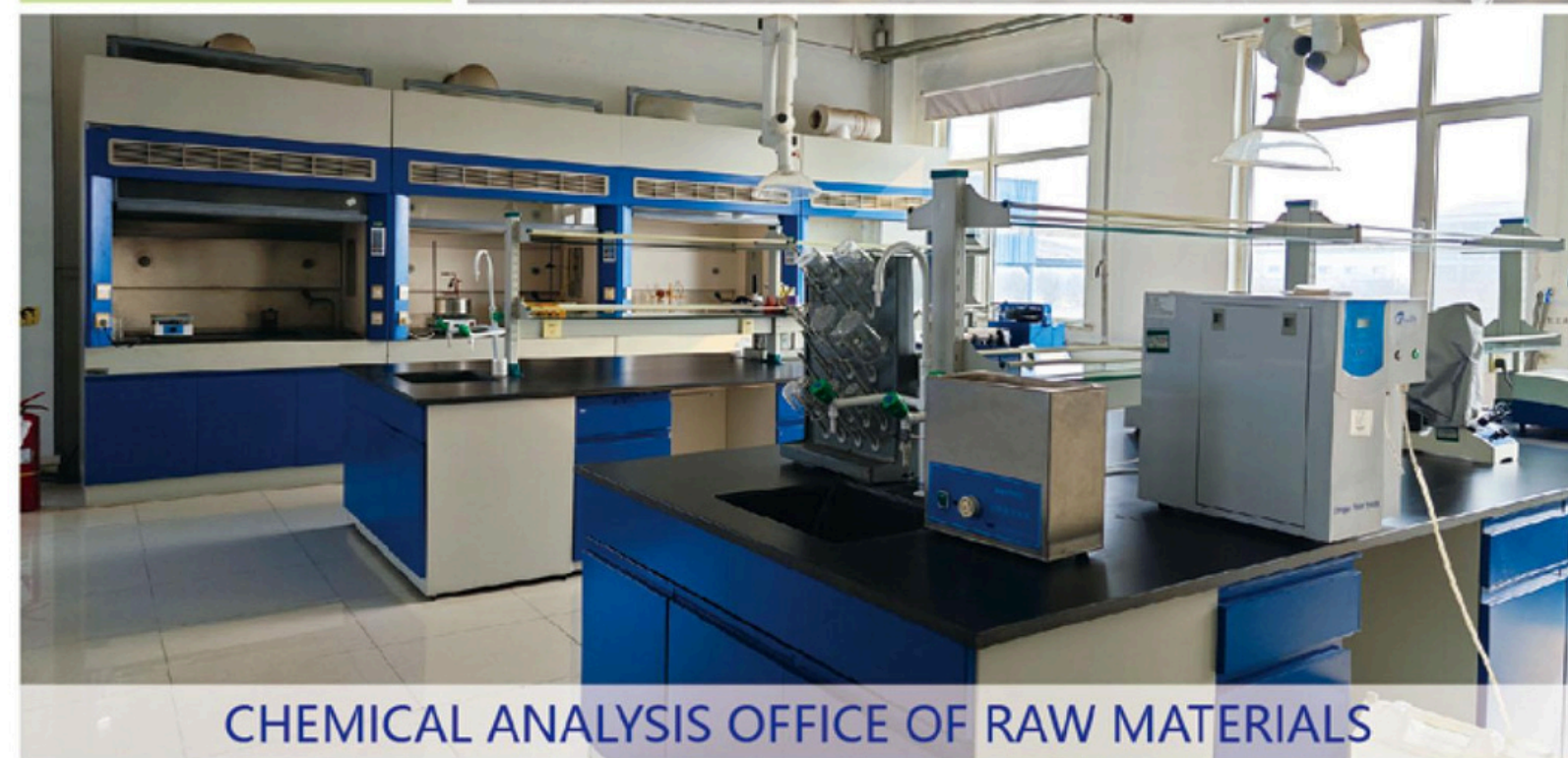
SEMI-FINISHED RUBBER PARTS EXTRUSION EQUIPMENT



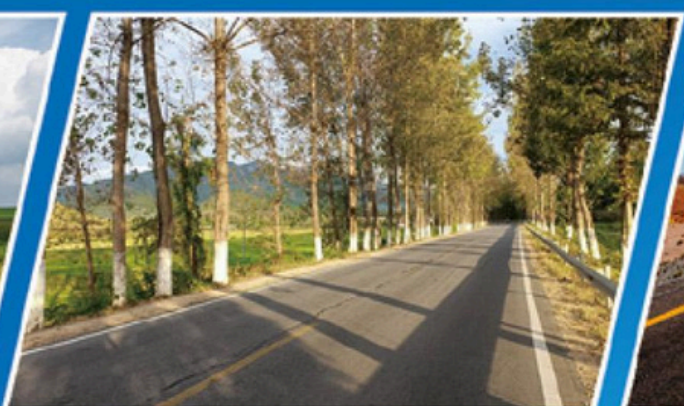
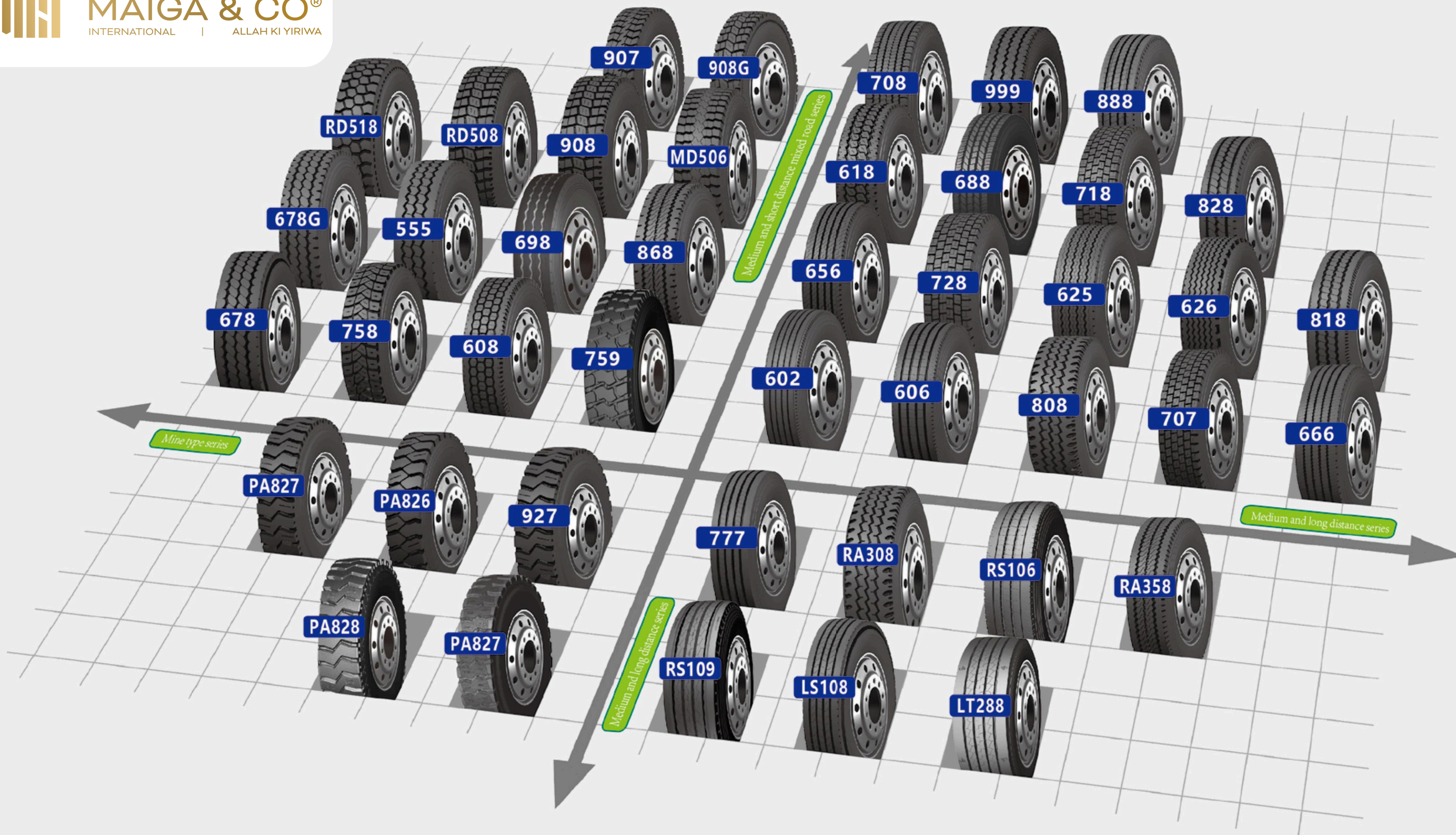
TYRE SDS BUBBLE CHECKING MACHINE



CURING WORKSHOP

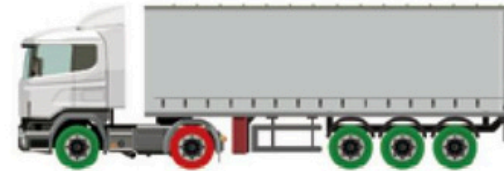


CHEMICAL ANALYSIS OFFICE OF RAW MATERIALS

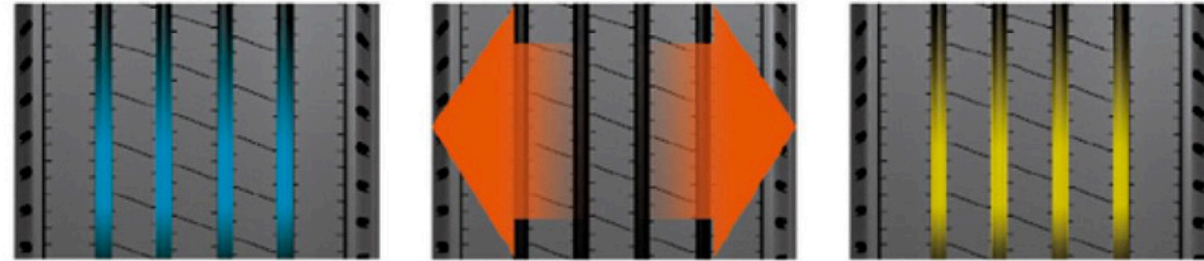




602



RECOMMENDED USE
NOT RECOMMENDED



Product features: low resistance, low heat generation, high speed stability, low noise.

Pattern type:
medium and long distance.

Applicable environment:
Suitable for medium and long distance vehicles on ordinary and highway.

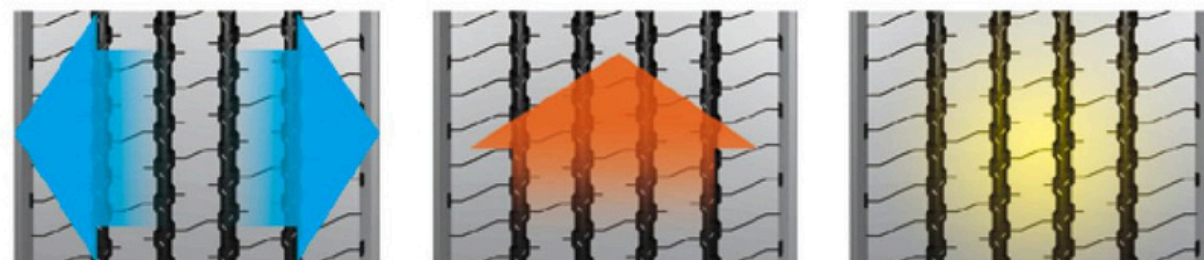
Size	Standard	Speed Rating	PR	TREAD DEPTH	Load index
11R22.5	8.25	M	14	10.9	144/142
11R22.5	8.25	M	16	10.9	146/143
295/75R22.5	9.00	M	14	10.9	144/141
295/75R22.5	9.00	M	16	10.9	146/143



666



RECOMMENDED USE
NOT RECOMMENDED



Product features: low heat generation, anti - slippery, good heat dissipation, wear resistance.

Pattern type:
medium and long distance.

Applicable environment:
Suitable for medium and long distance vehicles on ordinary and highway.

Size	Standard	Speed Rating	PR	TREAD DEPTH	Load index
295/80R22.5	9.00	M	18	16	152/149



606



RECOMMENDED USE
NOT RECOMMENDED



Product features: low heat generation, anti - slippery, good heat dissipation, wear resistance.

Pattern type:
medium and long distance.

Applicable environment:
Suitable for medium and long distance vehicles on ordinary and highway.

Size	Standard	Speed Rating	PR	TREAD DEPTH	Load index
11R22.5	8.25	M	14	15	144/142
11R22.5	8.25	M	16	15	146/143
11R24.5	8.25	M	14	15	146/143
11R24.5	8.25	M	16	15	149/146
255/70R22.5	7.50	M	14	13	138/134
255/70R22.5	7.50	M	16	13	140/137
285/75R24.5	8.25	M	14	15	144/141
285/75R24.5	8.25	M	16	15	147/144
295/75R22.5	9.00	M	14	15	144/141
295/75R22.5	9.00	M	16	15	146/143
295/80R22.5	9.00	M	18	15	152/149
315/80R22.5	9.00	M	20	14.5	156/153

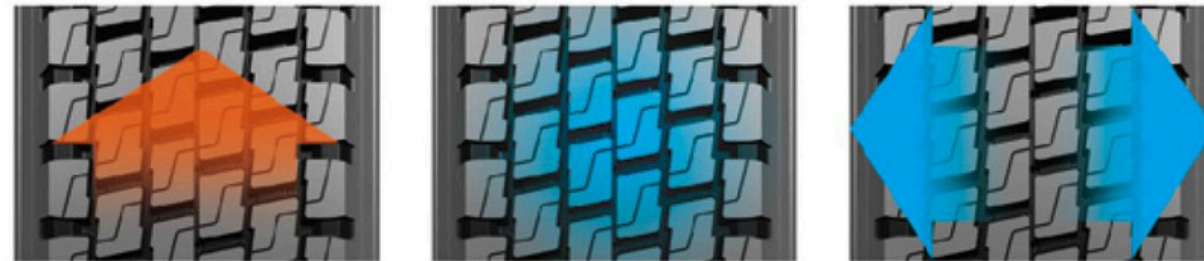




707



RECOMMENDED USE
NOT RECOMMENDED



Product features: low resistance, low heat generation, high speed stability, low noise.

Pattern type:
medium and long distance.

Applicable environment:
Suitable for medium and long distance vehicles on ordinary and highway.

Size	Standard	Speed Rating	PR	TREAD DEPTH	Load index
11R22.5	8.25	M	16	22.5	146/143
295/80R22.5	9.00	M	18	22.5	152/149
315/80R22.5	9.00	M	20	23	156/153
12R22.5	9.00	M	18	23	152/149



656



RECOMMENDED USE
NOT RECOMMENDED



Product features: low heat generation, anti - slippery, good heat dissipation, wear resistance.

Pattern type:
medium and long distance.

Applicable environment:
Suitable for medium and long distance vehicles on ordinary and highway.

Size	Standard	Speed Rating	PR	TREAD DEPTH	Load index
12R22.5	9.00	M	18	16.5	152/149
295/80R22.5	9.00	M	18	15.5	152/149



808



RECOMMENDED USE
NOT RECOMMENDED



Product features: tear resistance, load resistance, anti-sideslip, low noise.

Pattern type:
short and medium distance area.

Applicable environment:
Suitable for medium and long distance vehicles on ordinary and highway.

Size	Standard	Speed Rating	PR	TREAD DEPTH	Load index
7.00R16LT	5.50F	L	14	12	118/114
7.50R16LT	6.00G	M	14	12	122/118
7.50R16LT	6.00G	L	16	12	124/120
8.25R16LT	6.50H	M	16	12	128/124
8.25R20	6.5	L	16	13	139/137
9.00R20	7.0	L	16	15.5	144/142
10.00R20	7.5	L	18	15.5	149/146
11R22.5	8.25	M	14	15	144/142
11R22.5	8.25	M	16	15	146/143
11R24.5	8.25	M	14	15	146/143
11R24.5	8.25	M	16	15	149/146
12.00R24	8.5	L	20	14	160/157
13R22.5	9.75	L	18	16.5	154/151
13R22.5	9.75	L	20	16.5	156/153
255/70R22.5	7.50	M	14	13	138/134
255/70R22.5	7.50	M	16	13	140/137
315/80R22.5	9.00	M	20	14.5	156/153





728



RECOMMENDED USE
NOT RECOMMENDED



Product features: strong driving, abrasion resistance, low heat generation, easy braking, long life.

Pattern type:
short and medium distance area.

Applicable environment:
Suitable for medium and long distance vehicles on ordinary and highway.

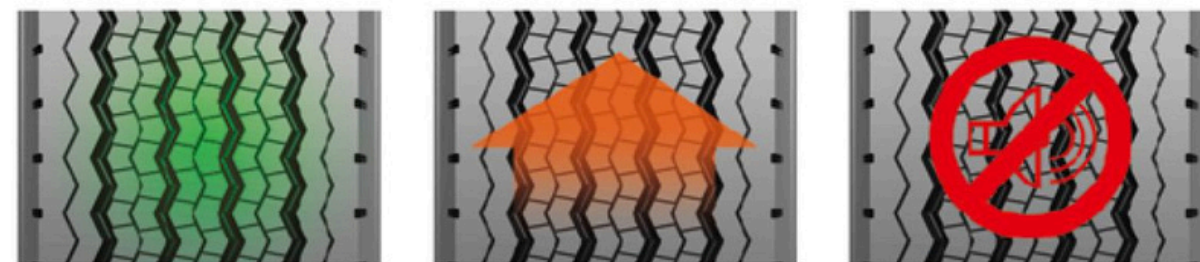
Size	Standard	Speed Rating	PR	TREAD DEPTH	Load index
12R22.5	9.00	L	18	21	152/149
295/80R22.5	9.00	L	18	19.5	152/149



625



RECOMMENDED USE
NOT RECOMMENDED



Product features: high speed stability, low heat generation, more comfortable, low noise.

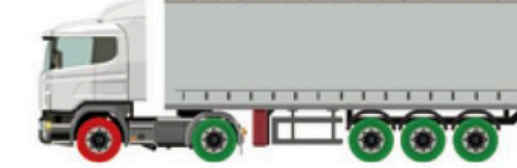
Pattern type:
medium and long distance.

Applicable environment:
Suitable for medium and long distance vehicles on ordinary and highway.

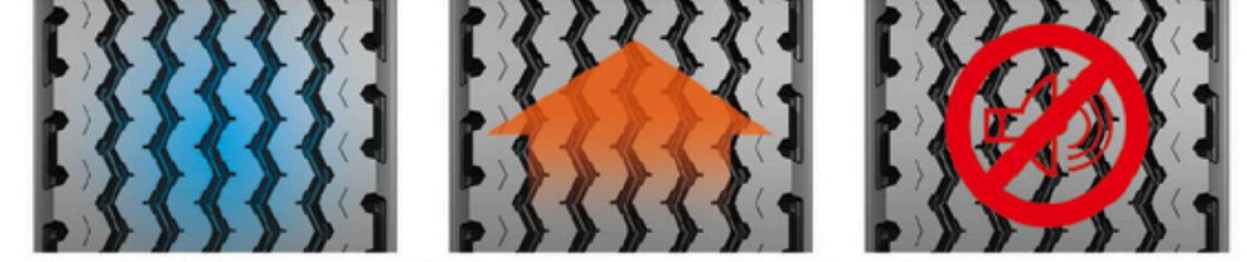
Size	Standard	Speed Rating	PR	TREAD DEPTH	Load index
385/65R22.5	11.75	K	20	16	160



626



RECOMMENDED USE
NOT RECOMMENDED



Product features: high speed stability, low heat generation, more comfortable, low noise.

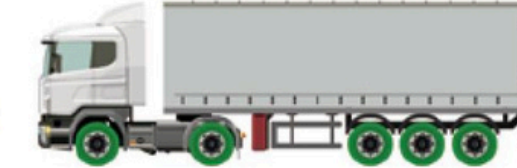
Pattern type:
medium and long distance.

Applicable environment:
Suitable for medium and long distance vehicles on ordinary and highway.

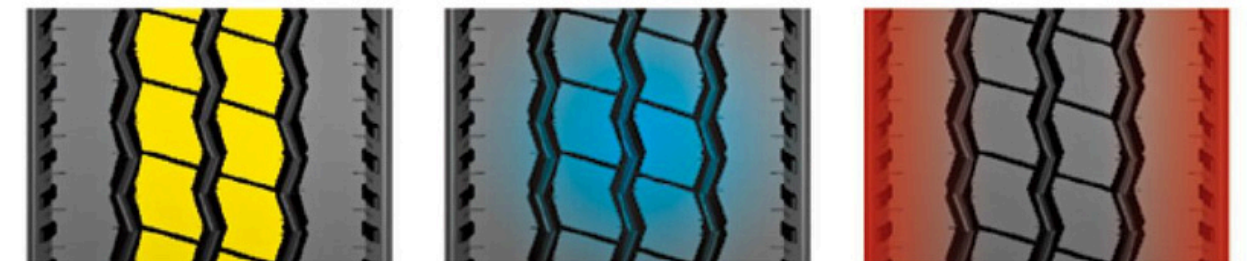
Size	Standard	Speed Rating	PR	TREAD DEPTH	Load index
385/65R22.5	11.75	K	20	16	160



818



RECOMMENDED USE
NOT RECOMMENDED



Product features: High performance, strong traction, abrasion resistance, strong grip.

Pattern type:
medium and long distance.

Applicable environment:
Suitable for medium and short distance vehicles on ordinary and mixed road surface.

Size	Standard	Speed Rating	PR	TREAD DEPTH	Load index
12.00R24	8.5	K	20	14	160/157
315/80R22.5	9.00	M	20	14.5	156/153



618



RECOMMENDED USE
NOT RECOMMENDED



Product features: strong drive, anti skid, wear resistance.

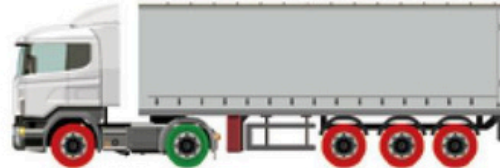
Pattern type:
medium and long distance.

Applicable environment:
Suitable for medium and short distance vehicles on ordinary and mixed road surface.

Size	Standard	Speed Rating	PR	TREAD DEPTH	Load index
11R22.5	8.25	M	14	22.5	144/142
11R22.5	8.25	M	16	22.5	146/143
11R24.5	8.25	M	14	22.5	146/143
11R24.5	8.25	M	16	22.5	149/146
285/75R24.5	8.25	M	14	22.5	144/141
285/75R24.5	8.25	M	16	22.5	147/144
295/75R22.5	9.00	M	14	22.5	144/141
295/75R22.5	9.00	M	16	22.5	146/143



718



RECOMMENDED USE
NOT RECOMMENDED



Product features: abrasion resistance, puncture resistance, strong load, strong grip.

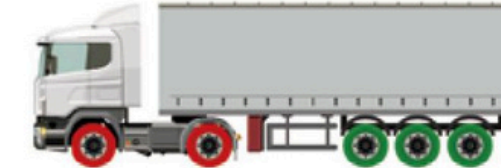
Pattern type:
medium and long distance.

Applicable environment:
Suitable for medium and long distance vehicles on ordinary and highway.

Size	Standard	Speed Rating	PR	TREAD DEPTH	Load index
315/80R22.5	9.00	L	20	16.5	156/153



688



RECOMMENDED USE
NOT RECOMMENDED



Product features: good wear resistance, low resistance, low heat generation, high speed stability, low noise.

Pattern type:
medium and long distance.

Applicable environment:
Suitable for medium and long distance vehicles on ordinary and highway.

Size	Standard	Speed Rating	PR	TREAD DEPTH	Load index
ST235/80R16	61/2J	L	12	8	126/122
ST235/80R16	61/2J	L	14	8	129/125
ST235/80R16	61/2J	M	16	8	130/126
ST235/85R16	61/2J	L	14	8	132/127
ST235/85R16	61/2J	M	16	8	133/128
215/75R17.5	6.00	M	16	12.5	128/126
215/75R17.5	6.00	J	18	12.5	135/133
235/75R17.5	6.75	M	16	12.5	132/130
235/75R17.5	6.75	J	18	12.5	143/141
225/70R19.5	6.75	M	14	13	128/126
225/70R19.5	6.75	M	16	13	130/128
245/70R19.5	7.50	M	14	13	133/131
245/70R19.5	7.50	M	16	13	135/133

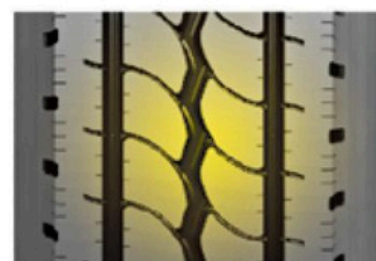
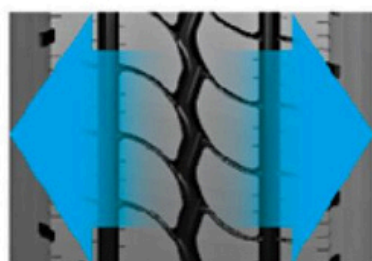




828



RECOMMENDED USE
NOT RECOMMENDED



Product features: slow heat generation, tear resistance, good heat dissipation, wear resistance.

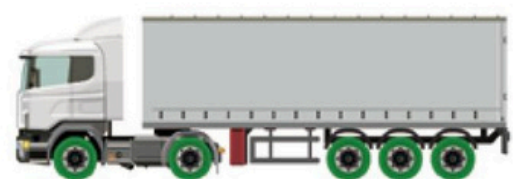
Pattern type:
medium and long distance.

Applicable environment:
Suitable for medium and long distance vehicles on ordinary and highway.

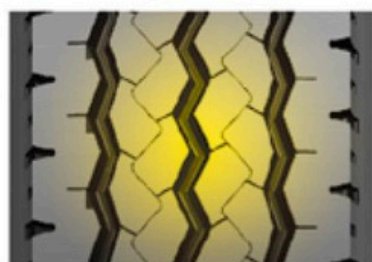
Size	Standard	Speed Rating	PR	TREAD DEPTH	Load index
12.00R24	8.5	K	18	14	158/155
12.00R24	8.5	K	20	14	160/157



999



RECOMMENDED USE
NOT RECOMMENDED



Product features: Good wear resistance, low noise, comfortable driving.

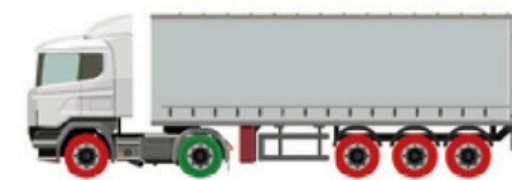
Pattern type:
medium and long distance.

Applicable environment:
medium and long distance vehicles with high speed and good road surface.

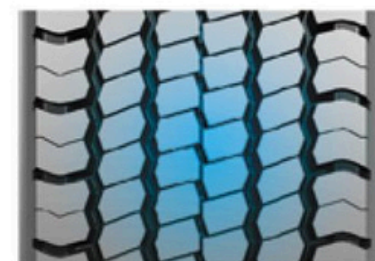
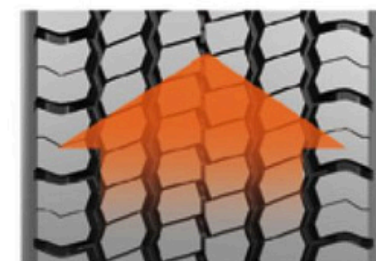
Size	Standard	Speed Rating	PR	TREAD DEPTH	Load index
12R22.5	9.00	L	18	16	152/149



708



RECOMMENDED USE
NOT RECOMMENDED



Product features: low resistance, low heat generation, high speed stability, low noise.

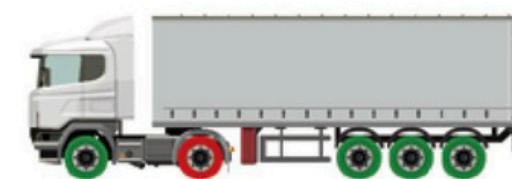
Pattern type:
medium and long distance.

Applicable environment:
Suitable for medium and long distance vehicles on ordinary and highway.

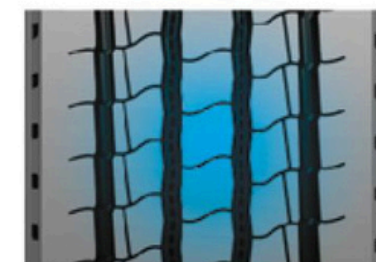
Size	Standard	Speed Rating	PR	TREAD DEPTH	Load index
295/75R22.5	9.00	M	14	21.5	144/141
295/75R22.5	9.00	M	16	21.5	146/143



888



RECOMMENDED USE
NOT RECOMMENDED



Product features: high speed stability, low heat generation, more comfortable, low noise.

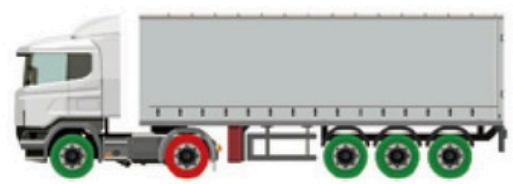
Pattern type:
medium and long distance.

Applicable environment:
medium and long distance vehicles with high speed and good road surface.

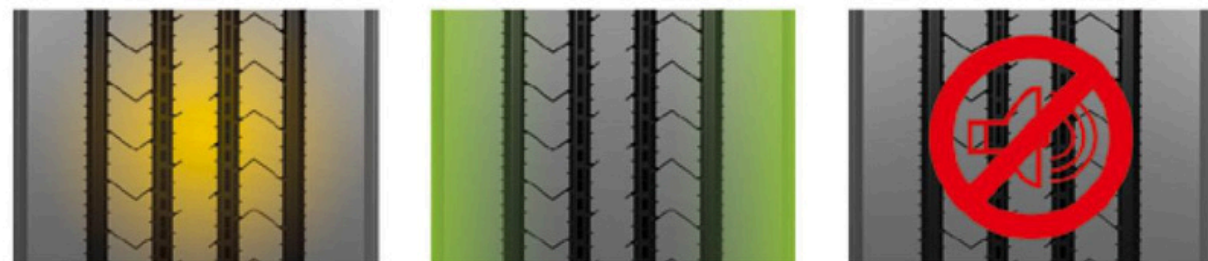
Size	Standard	Speed Rating	PR	TREAD DEPTH	Load index
12R22.5	9.00	L	18	16	152/149



777



RECOMMENDED USE
NOT RECOMMENDED



Product features: Good wear resistance, long distance performance, anti sideslip, low noise.

Pattern type:
medium and long distance.

Applicable environment:
medium and long distance vehicles with high speed and good road surface.

Size	Standard	Speed Rating	PR	TREAD DEPTH	Load index
12R22.5	9.00	L	18	16.5	152/149



RA308



RECOMMENDED USE
NOT RECOMMENDED



Product features: tear resistance, load resistance, anti-sideslip, low noise.

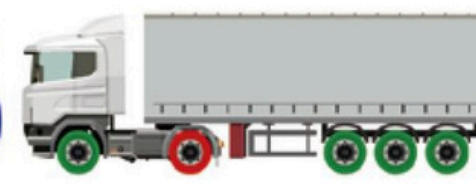
Pattern type:
short and medium distance .

Applicable environment:
Suitable for medium and long distance vehicles on ordinary and highway.

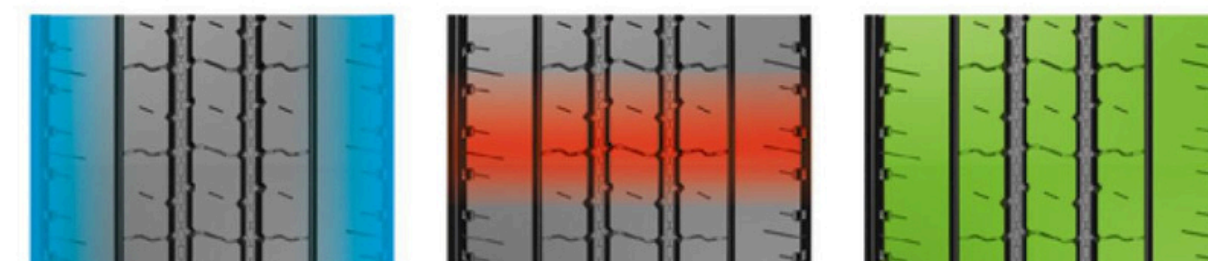
Size	Standard	Speed Rating	PR	TREAD DEPTH	Load index
11.00R20	8.0	L	18	17	152/149
12.00R20	8.5	L	20	17.5	156/153
12R22.5	9.00	M	18	15.5	152/149



RS106



RECOMMENDED USE
NOT RECOMMENDED



Product features: low heat generation, anti - slippery, good heat dissipation, wear resistance.

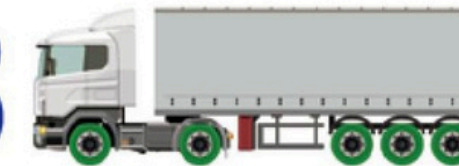
Pattern type:
medium and long distance.

Applicable environment:
Suitable for medium and long distance vehicles on ordinary and highway.

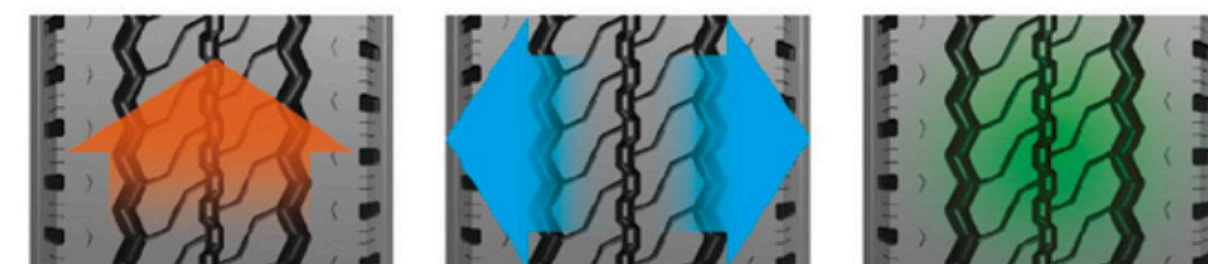
Size	Standard	Speed Rating	PR	TREAD DEPTH	Load index
12R22.5	9.00	M	18	15	152/149



RA358



RECOMMENDED USE
NOT RECOMMENDED



Product features: Tear resistant, comfortable and safe, strong grip.

Pattern type:
medium and short distance area.

Applicable environment:
Suitable for medium and long distance vehicles on ordinary and highway.

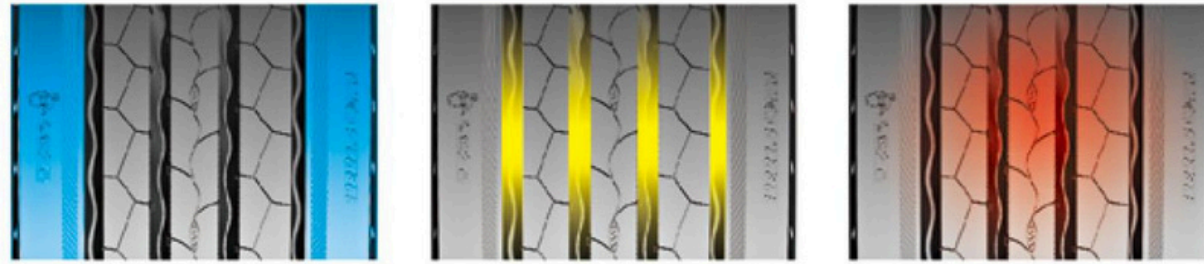
Size	Standard	Speed Rating	PR	TREAD DEPTH	Load index
12R22.5	9.00	L	18	15	152/149



RS109



RECOMMENDED USE
NOT RECOMMENDED



Product features: Good wear resistance, long distance performance, anti sideslip, low noise.

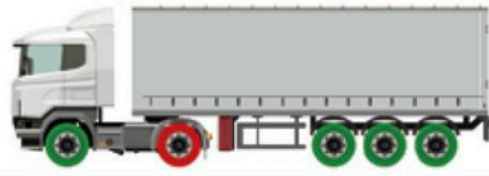
Pattern type:
medium and long distance.

Applicable environment:
medium and long distance vehicles with high speed and good road surface.

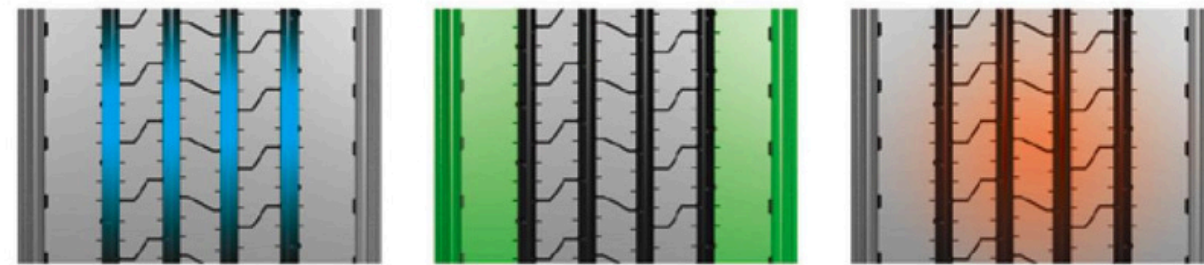
Size	Standard	Speed Rating	PR	TREAD DEPTH	Load index
12R22.5	9.00	L	18	16.5	152/149



LS108



RECOMMENDED USE
NOT RECOMMENDED



Product features: Tear resistant, comfortable and safe, strong grip.

Pattern type:
medium and long distance.

Applicable environment:
Suitable for medium and long distance vehicles on ordinary and highway.

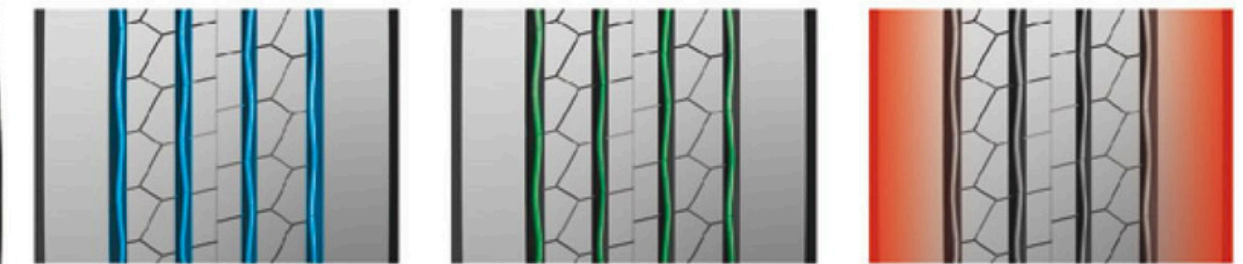
Size	Standard	Speed Rating	PR	TREAD DEPTH	Load index
12R22.5	9.00	L	18	16.5	152/149



LT288



RECOMMENDED USE
NOT RECOMMENDED



Product features: strong driving, abrasion resistance, low heat generation, easy braking, long life.

Pattern type:
short and medium distance area.

Applicable environment:
Suitable for medium and long distance vehicles on ordinary and highway.

Size	Standard	Speed Rating	PR	TREAD DEPTH	Load index
295/60R22.5	9.00	M	18	15.5	150/147

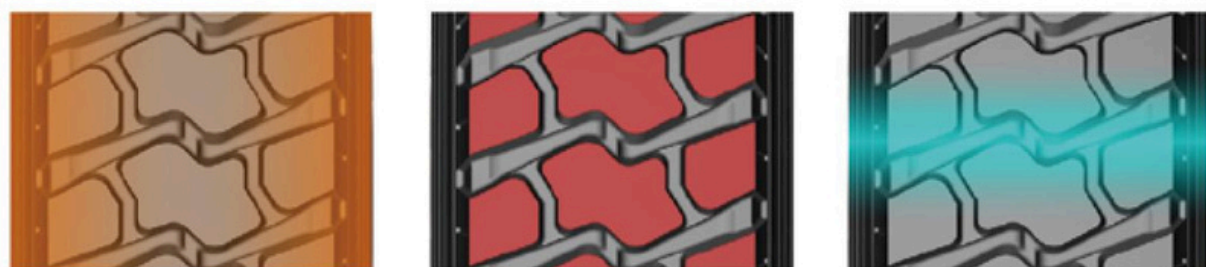




759



RECOMMENDED USE
NOT RECOMMENDED



Product features: cutting resistance, puncture resistance, strong driving, wear resistance, strong load.

Pattern type:
mixed pavement.

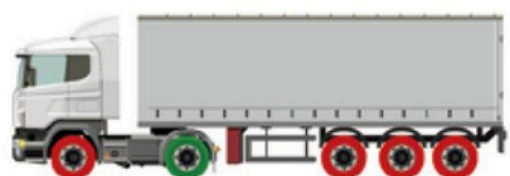
Applicable environment:

Suitable for mixed road surface and a few short and medium distance vehicles on the road with poor road condition.

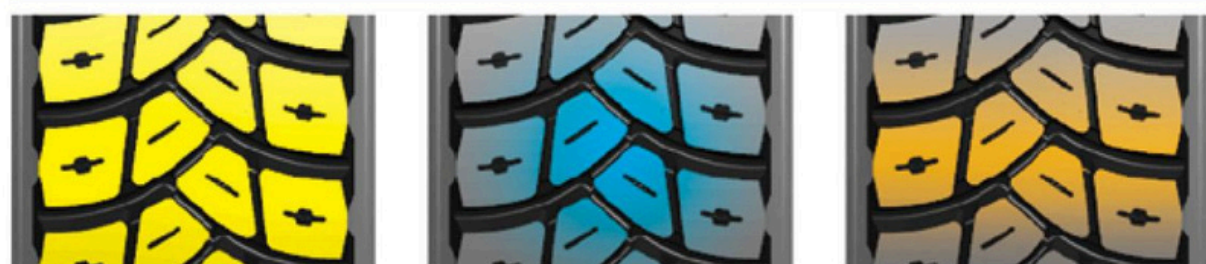
Size	Standard	Speed Rating	PR	TREAD DEPTH	Load index
13R22.5	9.75	L	18	18.5	154/151
13R22.5	9.75	L	20	18.5	156/153



758



RECOMMENDED USE
NOT RECOMMENDED



Product features: strong drive, resistance to thorns, anti falling block, strong grip.

Pattern type:
mixed pavement.

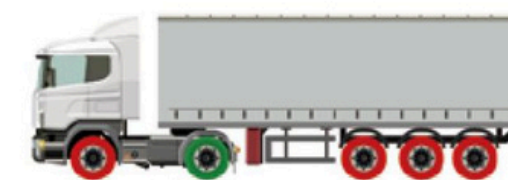
Applicable environment:

Suitable for short-distance vehicles on unpaved road surface (mining area, mountain area, site, etc.)

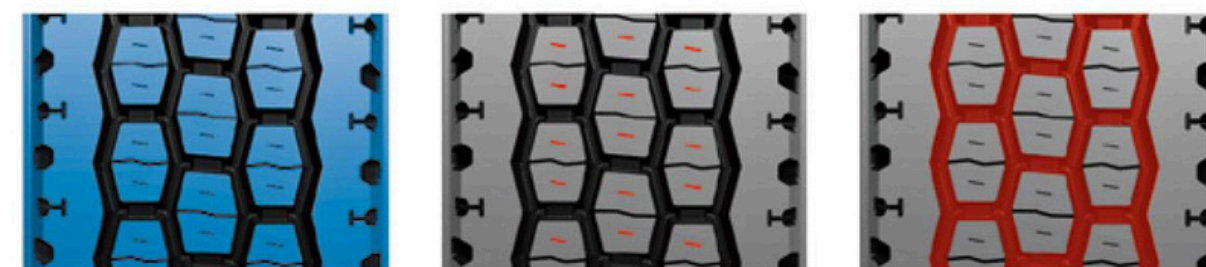
Size	Standard	Speed Rating	PR	TREAD DEPTH	Load index
315/80R22.5	9.00	K	20	21	156/153
12R22.5	9.00	K	18	21	152/149



608



RECOMMENDED USE
NOT RECOMMENDED



Product features: strong driving, load resistance, easy braking, long life.

Pattern type:
medium and long distance.

Applicable environment:

Suitable for medium and long distance vehicles on ordinary and highway.

Size	Standard	Speed Rating	PR	TREAD DEPTH	Load index
11R22.5	8.25	L	14	21.3	144/142
11R22.5	8.25	L	16	21.3	146/143
11R24.5	8.25	L	14	21.3	146/143
11R24.5	8.25	L	16	21.3	149/146
285/75R24.5	8.25	L	14	21	144/141
285/75R24.5	8.25	L	16	21	147/144
295/75R22.5	9.00	K	14	21.3	144/141
295/75R22.5	9.00	K	16	21.3	146/143

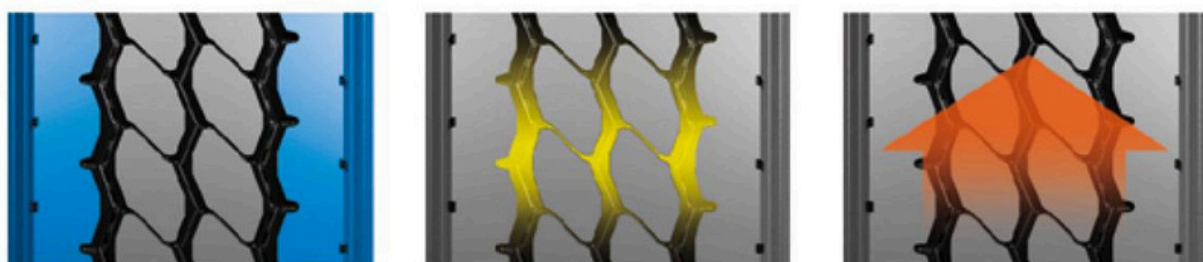




678



RECOMMENDED USE
NOT RECOMMENDED



Product features: Tear resistant, comfortable and safe, strong grip.

Pattern type:
medium and long distance.

Applicable environment:
Suitable for medium and long distance vehicles on ordinary and highway.

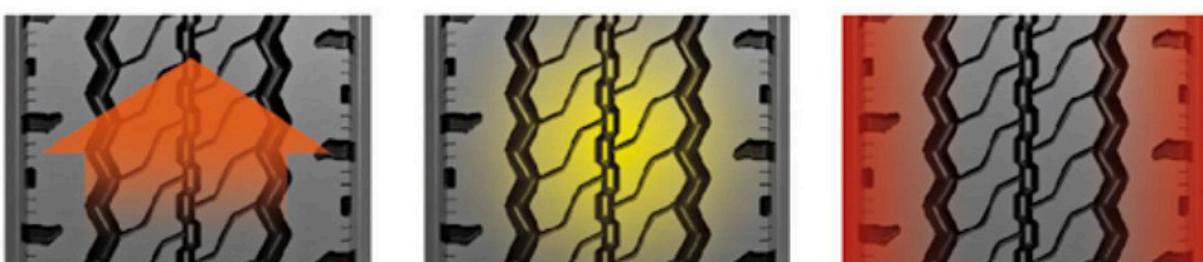
Size	Standard	Speed Rating	PR	TREAD DEPTH	Load index
12R22.5	9.00	K	18	17.5	152/149



868



RECOMMENDED USE
NOT RECOMMENDED



Product features: Tear resistant, comfortable and safe, strong grip.

Pattern type:
medium and short distance.

Applicable environment:
Suitable for medium and long distance vehicles on ordinary and highway.

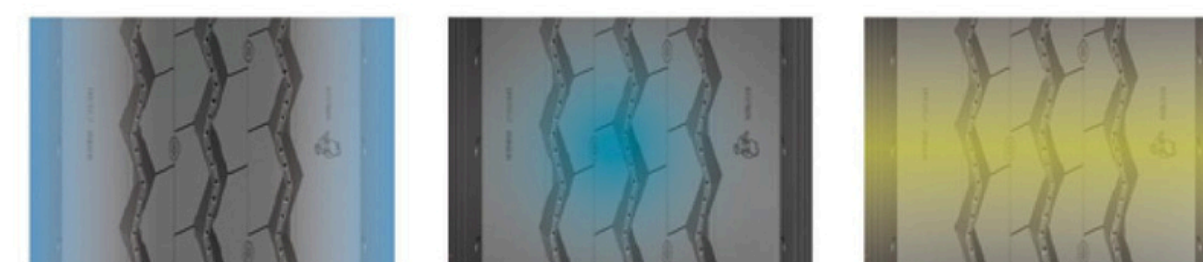
Size	Standard	Speed Rating	PR	TREAD DEPTH	Load index
10.00R20	7.5	K	18	15.5	149/146
11.00R20	8.0	L	18	16	152/149
315/80R22.5	9.00	M	20	17	156/153



698



RECOMMENDED USE
NOT RECOMMENDED



Product features: Good wear resistance, low noise, comfortable driving.

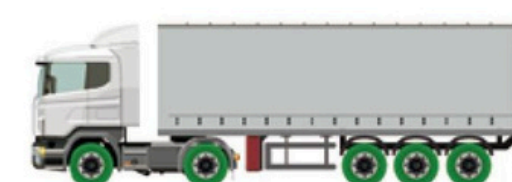
Pattern type:
medium and long distance.

Applicable environment:
medium and long distance vehicles with high speed and good road surface.

Size	Standard	Speed Rating	PR	TREAD DEPTH	Load index
12R22.5	9.00	L	18	16.5	152/149



555



RECOMMENDED USE
NOT RECOMMENDED



Product features: Good wear resistance, low noise, comfortable driving.

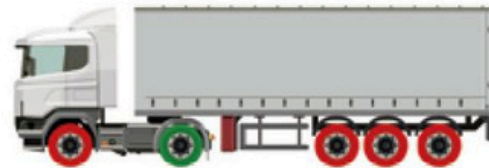
Pattern type:
medium and long distance.

Applicable environment:
medium and long distance vehicles with high speed and good road surface.

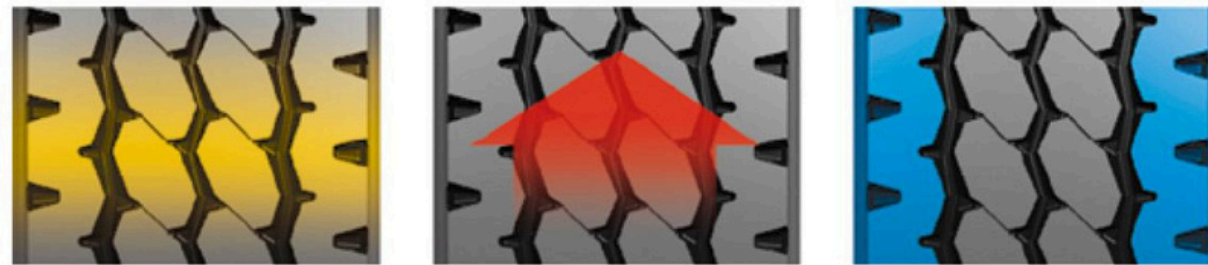
Size	Standard	Speed Rating	PR	TREAD DEPTH	Load index
12R22.5	9.00	K	18	17.5	152/149



678G



RECOMMENDED USE
NOT RECOMMENDED



Product features: cutting resistance, puncture resistance, strong driving, wear resistance, strong load.

Pattern type:
mixed pavement.

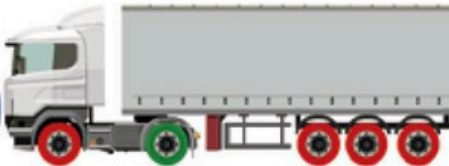
Applicable environment:

Suitable for mixed road surface and a few short and medium distance vehicles on the road with poor road condition.

Size	Standard	Speed Rating	PR	TREAD DEPTH	Load index
12.00R20	8.5	K	20	17	156/153



MD506



RECOMMENDED USE
NOT RECOMMENDED



Product features: strong driving, abrasion resistance, low heat generation, easy braking, long life.

Pattern type:
short and medium distance area.

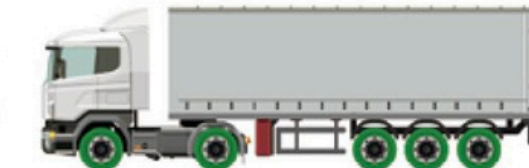
Applicable environment:

Suitable for medium and short distance vehicles on ordinary and mixed road surface.

Size	Standard	Speed Rating	PR	TREAD DEPTH	Load index
12R22.5	9.00	L	18	18.5	152/149



908



RECOMMENDED USE
NOT RECOMMENDED



Product features: cutting resistance, puncture resistance, strong driving, wear resistance, strong load.

Pattern type:
mixed pavement.

Applicable environment:

Suitable for mixed road surface and a few short and medium distance vehicles on the road with poor road condition.

Size	Standard	Speed Rating	PR	TREAD DEPTH	Load index
7.00R16LT	5.50F	K	14	14	118/114
7.50R16LT	6.00G	K	14	14	122/118
7.50R16LT	6.00G	K	16	14	124/120
8.25R16LT	6.50H	K	16	15	128/124
9.00R20	7.0	K	16	17.5	144/142
10.00R20	7.5	K	18	18.5	149/146
11R24.5	8.25	K	14	26	146/143
11R24.5	8.25	K	16	26	149/146





RD508



RECOMMENDED USE
NOT RECOMMENDED



Product features: cutting resistance, puncture resistance, strong driving, wear resistance, strong load.

Pattern type:
mixed pavement.

Applicable environment:

Suitable for mixed road surface and a few short and medium distance vehicles on the road with poor road condition.

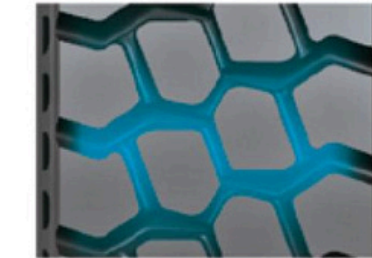
Size	Standard	Speed Rating	PR	TREAD DEPTH	Load index
11.00R20	8.0	K	18	19.5	152/149
12.00R20	8.5	K	20	20.5	156/153



RD518



RECOMMENDED USE
NOT RECOMMENDED



Product features: strong driving, tear resistance, strong load, prevent falling block.

Pattern type:
mixed pavement.

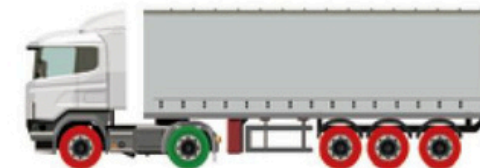
Applicable environment:

Suitable for medium and short distance vehicles in mining area and mixed road surface.

Size	Standard	Speed Rating	PR	TREAD DEPTH	Load index
11.00R20	8.0	J	18	20	152/149
12.00R20	8.5	J	20	21	156/153



908G



RECOMMENDED USE
NOT RECOMMENDED



Product features: cutting resistance, puncture resistance, strong driving, wear resistance, strong load.

Pattern type:
mixed pavement.

Applicable environment:

Suitable for mixed road surface and a few short and medium distance vehicles on the road with poor road condition.

Size	Standard	Speed Rating	PR	TREAD DEPTH	Load index
12.00R20	8.5	K	20	20.5	156/153



907



RECOMMENDED USE
NOT RECOMMENDED



Product features: cutting resistance, puncture resistance, strong driving, wear resistance, strong load.

Pattern type:
medium and short distance area.

Applicable environment:

Suitable for medium and short distance vehicles on ordinary and mixed road surface.

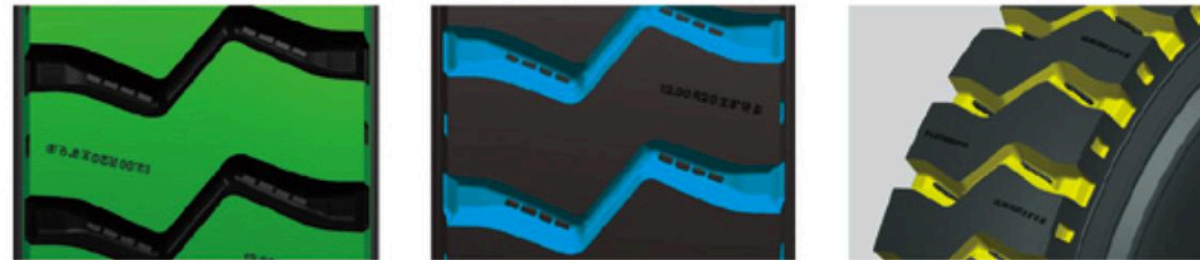
Size	Standard	Speed Rating	PR	TREAD DEPTH	Load index
12.00R24	8.5	K	20	20.5	160/157



927



RECOMMENDED USE
NOT RECOMMENDED



Product features: strong drive, abrasion resistance, puncture resistance, impact resistance.

Pattern type:
mine type.

Applicable environment:

Suitable for short-distance vehicles on unpaved road surface (mining area, mountain area, site, etc.)

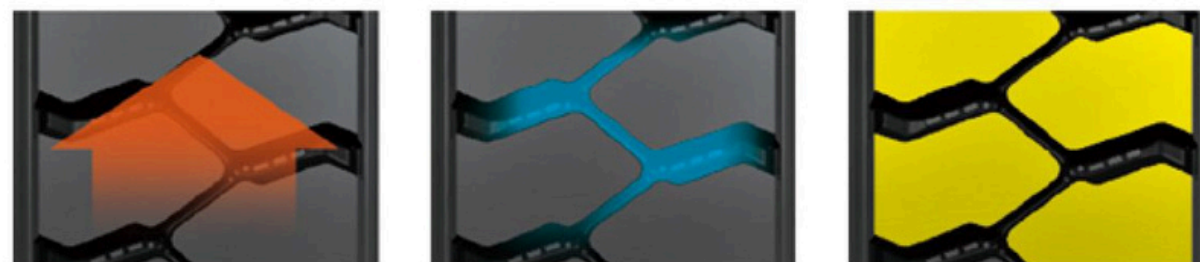
Size	Standard	Speed Rating	PR	TREAD DEPTH	Load index
8.25R16LT	6.50H	F	16	21	128/124
8.25R20	6.5	F	16	17	139/137
9.00R20	7.0	F	16	21	144/142
10.00R20	7.5	F	18	22	149/146



PA826



RECOMMENDED USE
NOT RECOMMENDED



Product features: strong drive, resistance to thorns, anti falling block, strong grip.

Pattern type:
mine type.

Applicable environment:

Suitable for short-distance vehicles on unpaved road surface (mining area, mountain area, site, etc.)

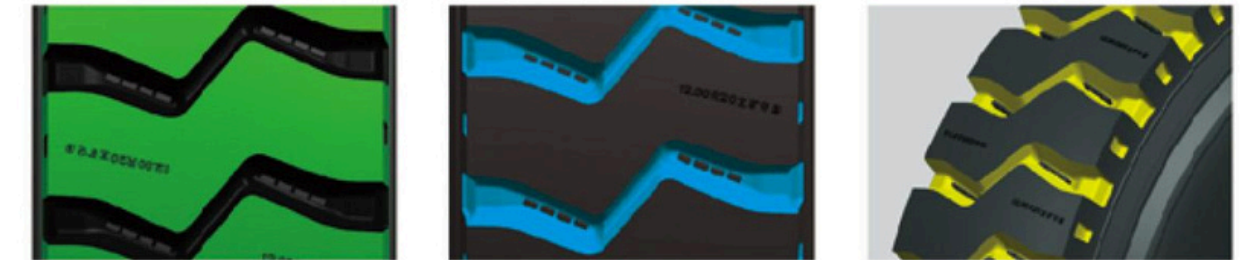
Size	Standard	Speed Rating	PR	TREAD DEPTH	Load index
11.00R20	8.0	F	18	24.5	152/149
12.00R20	8.5	F	20	25	156/153



PA827



RECOMMENDED USE
NOT RECOMMENDED



Product features: strong drive, abrasion resistance, puncture resistance, impact resistance.

Pattern type:
mine type.

Applicable environment:

Suitable for short-distance vehicles on unpaved road surface (mining area, mountain area, site, etc.)

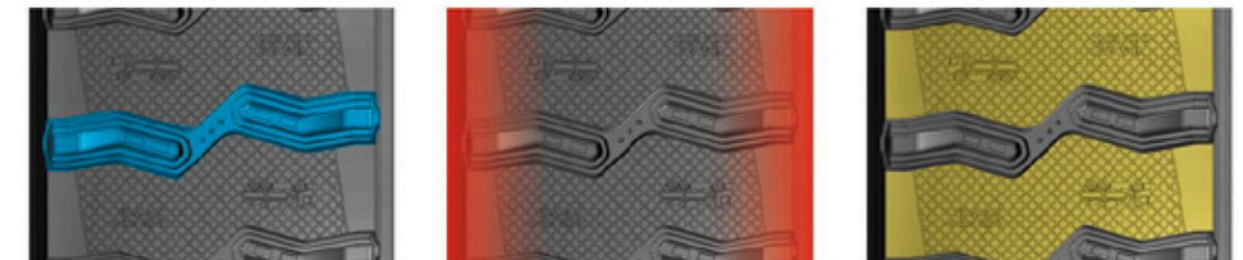
Size	Standard	Speed Rating	PR	TREAD DEPTH	Load index
11.00R20	8.0	F	18	24.5	152/149
12.00R20	8.5	F	20	25	156/153



PA877



RECOMMENDED USE
NOT RECOMMENDED



Product features: impact resistance, load resistance, strong drive, puncture resistance.

Pattern type:
mine type.

Applicable environment:

Suitable for short-distance vehicles on unpaved road surface (mining area, mountain area, site, etc.)

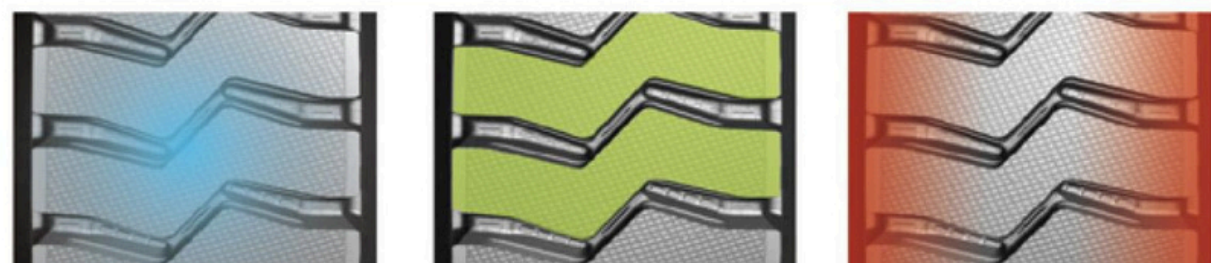
Size	Standard	Speed Rating	PR	TREAD DEPTH	Load index
11.00R20	8.0	D	18	23	152/149
12.00R20	8.5	D	20	24	156/153



PA828



RECOMMENDED USE
NOT RECOMMENDED



Product features: strong drive, abrasion resistance, puncture resistance, impact resistance.

Pattern type:
mine type.

Applicable environment:

Suitable for short-distance vehicles on unpaved road surface (mining area, mountain area, site, etc.)

Size	Standard	Speed Rating	PR	TREAD DEPTH	Load index
12.00R20	8.5	F	20	25	156/153



Speed level and load index corresponding table

Load index		Load index		Load index		Speed class	
Load index	Load capacity (kg)	Load index	Load capacity (kg)	Load index	Load capacity (kg)	Speed class	Speed (km/h)
115	1215	136	2240	157	4125	B	50
116	1250	137	2300	158	4250	C	60
117	1285	138	2360	159	4375	D	65
118	1320	139	2430	160	4500	E	70
119	1360	140	2500	161	4625	F	80
120	1400	141	2575	162	4750	G	90
121	1450	142	2650	163	4875	J	100
122	1500	143	2725	164	5000	K	110
123	1550	144	2800	165	5150	L	120
124	1600	145	2900	166	5300	M	130
125	1650	146	3000	167	5450	N	140
126	1700	147	3075	168	5600	P	150
127	1750	148	3150	169	5800	Q	160
128	1800	149	3250	170	6000	R	170
129	1850	150	3350	171	6150		
130	1900	151	3450	172	6300		
131	1950	152	3550	173	6500		
132	2000	153	3650	174	6700		
133	2060	154	3750	175	6900		
134	2120	155	3875	176	7100		
135	2180	156	4000	177	7300		

Reference table for tube and tubeless tire specification replacement

There are inner tube tires		Tubeless tires				
Skew tire	Radial tire	90 series	80 series	75 series	70 series	65 series
7.00-16	7.00R16	8R17.5	/	205/75R17.5	/	/
7.50-16	7.50R16	8.5R17.5	/	215/75R17.5	/	/
8.25-16	8.25R16	9.5R17.5	/	235/75R17.5	245/70R19.5	/
7.50-20	/	8R22.5	/	/	/	/
8.25-20	8.25R20	9R22.5	/	/	/	/
9.00-20	9.00R20	10R22.5	/	/	255/70R22.5	/
10.00-20	10.00R20	11R22.5	275/80R22.5	/	275/70R22.5	/
11.00-20	11.00R20	12R22.5	295/80R22.5	/	/	385/65R22.5
12.00-20	12.00R20	13R22.5	315/80R22.5	/	315/70R22.5	425/65R22.5

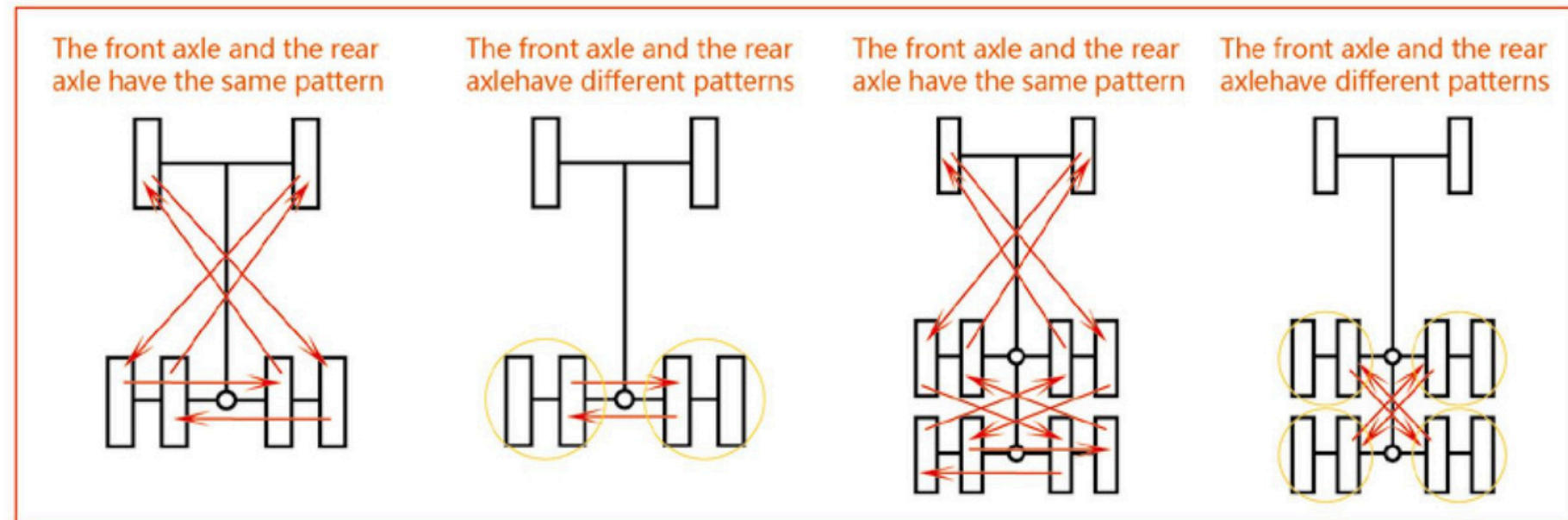
All-steel radial tyres

Usage and maintenance

Position change

Generally, the front wheel is affected by the brake device, which is easy to produce partial wear. The rear wheel because of heavy load, especially when it is the driving wheel, its degree of wear is even worse.

Timely position change of tyres can also detect the problems of vehicle inclination as early as possible. Tyre position change method refer to the following figure:



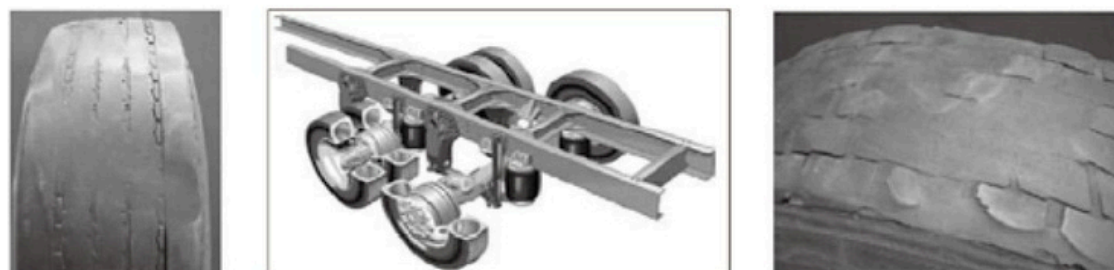
Braking system

An unbalanced braking system or component failure may cause the pneumatic brakes to malfunction, causing tyre wear and damage.

Failure	Probable reason	Result
Braking heat	<ul style="list-style-type: none"> Improper gear on downhill leads to overuse Braking delay due to improper alignment of wheel steel bearings Repeatedly stop and start with no cooling time Incorrect alignment or braking balance causes one or more brakes to experience excessive braking. 	Tyre bead damage, from simple deformation to body wire pulling out from the bead wire.
Brake locking	<ul style="list-style-type: none"> The braking system is out of round The bleed valve is too slow. The tension regulator set improperly Brake drum deviation. 	Tyre ground flat spot and irregular wear.

Suspension system

The suspension system forms the connection between the truck and the tyre, providing important support for tyre performance. The suspension system must support the vehicle load and keep the tyres in the proper road driving position. If the suspension is working properly, the tyre will travel straight and the load will be evenly distributed, resulting in slower tyre wear and lower cost per mile. All suspension systems have moving parts, so wear and tear occurs. Worn or broken suspension components are one of the main causes of uneven tyre wear and decreased handling.



Air pressure

1. Tyres should be inflated in accordance with the air pressure load table stipulated in the current national standards.
2. After the tyre is inflated, the parts should be checked for air leakage. If the air leakage is found, it should be repaired in time.
3. The internal pressure of the tyre must be normal in use. When running for a long time or working, the tyre pressure should be checked regularly; When stopping for a long time, the front and rear axles must be raised.
4. Never deflate air from the hot tyre, or the tyre will become underinflated.
5. When twin tyres are installed, the inflation pressure of the two tyres is the same.
6. The spare tyre of the vehicle should be available at all times.

Correct inflation:

With the correct tyre profile, the tread can be completely lifted from the road, improving traction, braking performance and safety.

Effects of underinflation:

Safety reduces the durability of the tyre body, thereby reducing the likelihood of retreading and increasing the rolling resistance of the tyre, resulting in fuel economy that reduces the vehicle's driving behavior.

Effects of overinflation:

Reduce the life of the tyre, especially the life of the tyre on the driving wheel
Comfort grip body durability and refurbishment possibilities



Load

1. Tyre load should conform to the current national standards stipulated in the load, strictly prohibited overload.
2. Serious overload will cause abnormal tyre tread wear, shoulder empty, toe blasting, etc.
3. High level, heavy load tyres are not suitable for high-speed driving.
4. The vehicle load should be evenly distributed to avoid unbalanced load.

Usage skills

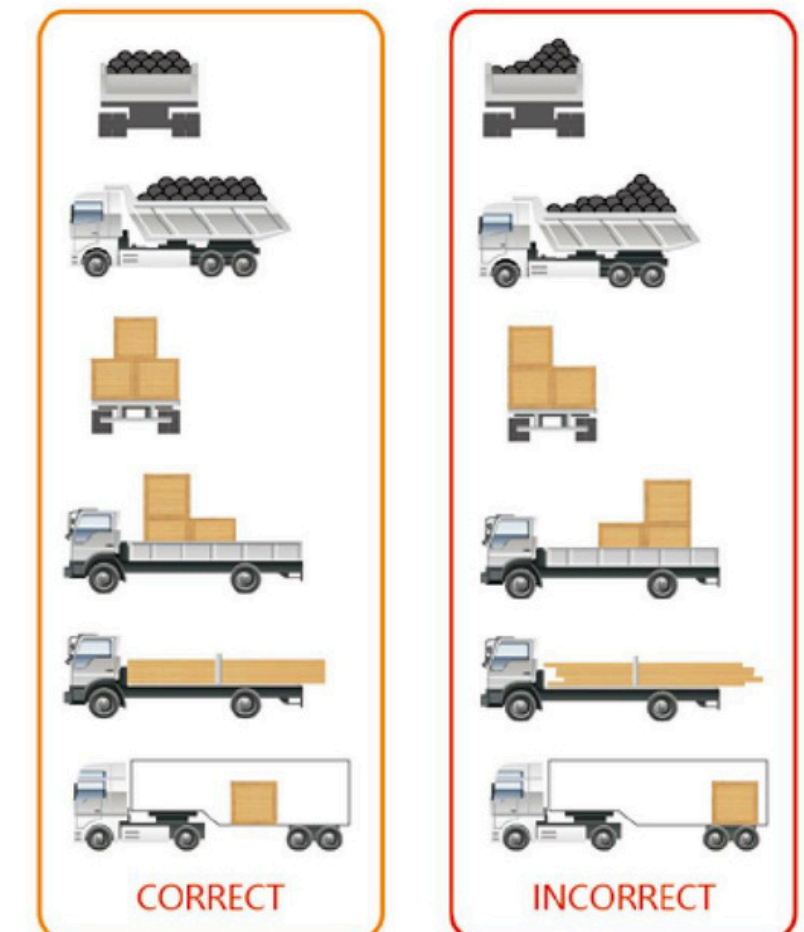
New tyres in use also have a period of run-in, generally about 200 kilometers.

Tyres should not be deflated after high speed driving. Avoid sudden starts, sharp brakes, sharp turns, etc.

Avoid speeding and overloading.

For poor road surface, try to avoid the tyre by violent impact. Slow down when you come to a bend. Keep a proper distance from the car while driving and often carry out tyre inspection, maintenance, transposition, repair and other work. The tyre is worn to the point of wear and must be replaced. Retreaded tyres are forbidden to be used in front wheels.

When driving at high speed for a period of time (usually 1-2 hours), take a 15-20 minute rest and check your tyres. Slow down and drive carefully in special weather or conditions (such as rainy days, foggy days, snow, mud, roads, etc.).





MAIGA & CO®

INTERNATIONAL



ALLAH KI YIRIWA



+90 535 941 47 28

+223 74 73 00 06

WWW.MAIGACO.COM

MAHAMADOU MAIGA906@YAHOO.COM

ZAFER MAH ADILE NASIT BULVARI SEHIR MERKEZI
HOME OFIS BLOK KAT 16 NO 191 ESENYURT ISTANBUL